

INSTALLATION GUIDE



**AGILE
OFFROAD**
SMARTER THAN DIRT®

SPRINTER AUXILIARY SHOCK KIT



Driver Side Upper Bracket



Passenger Side Upper Bracket

Upper Auxiliary Shock Brackets :

- (Qty 6) 3/8-16x1" Bolts
- (Qty 10) 3/8" Washers
- (Qty 2) 3/8" Lock Washers
- (Qty 4) 3/8" Nyloc Nuts
- (Qty 2) 3/8" Flag Nut
- (Qty 4) 1/2-13x1.25" Bolts
- (Qty 2) 1/2-13x2.75" Bolts
- (Qty 10) 1/2" Washers
- (Qty 2) 1/2" Lock Washers
- (Qty 1) 1/2" Double Nut Plate



Passenger Side

Lower Auxiliary Shock Brackets:

- (Qty 8) M10x1.5x Bolts
- (Qty 2) 1/2-13x5" Bolts
- (Qty 6) 1/2" Washers
- (Qty 2) 1/2-13 Lock Nuts



Driver Side

TOOLS NEEDED

3/8" Drill Bit

Panel/Clip Removal Tool

Hydraulic Jack

Utility Knife

Socket/Wrench Kit: 3/8", 1/2", 10mm, 15mm, 16mm

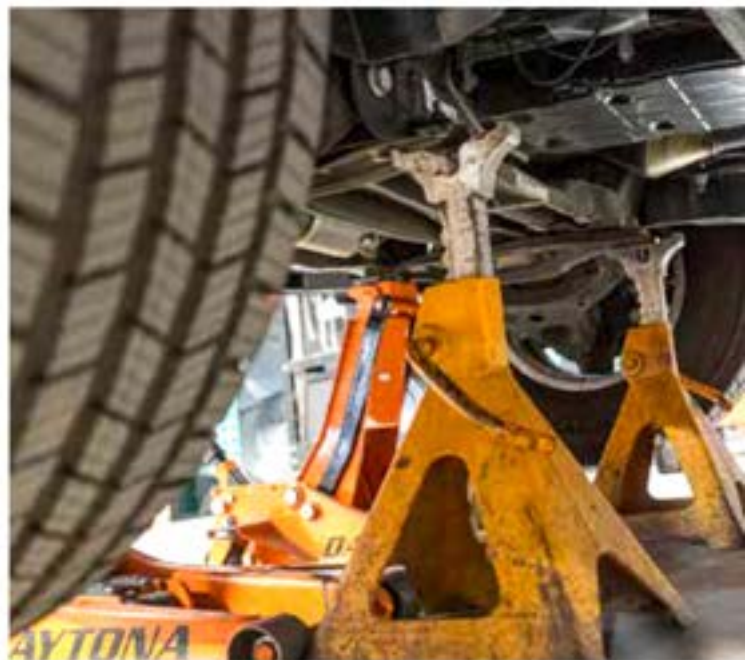
Drill

Torque Wrench

Jack Stands

Anti-Seize Lubricant

Instructions



Use two hydraulic floor jacks to lift the front of the van then place two jack stands under the sub-frame as shown above. With the van securely lifted remove the front wheels. Use a 10mm wrench/socket to remove the inner fender liner nuts and a panel/clip removal tool to remove the clips.





Use a 16mm wrench/socket to remove the four bolts and nuts holding the U-shaped bracket on of the bump stop assembly.



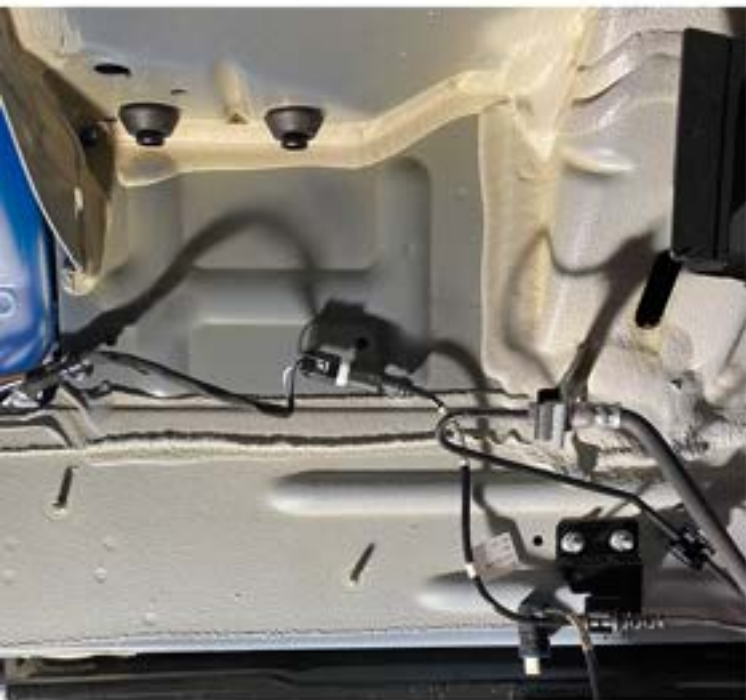
Remove the U-shaped bracket and clean the mounting surfaces.



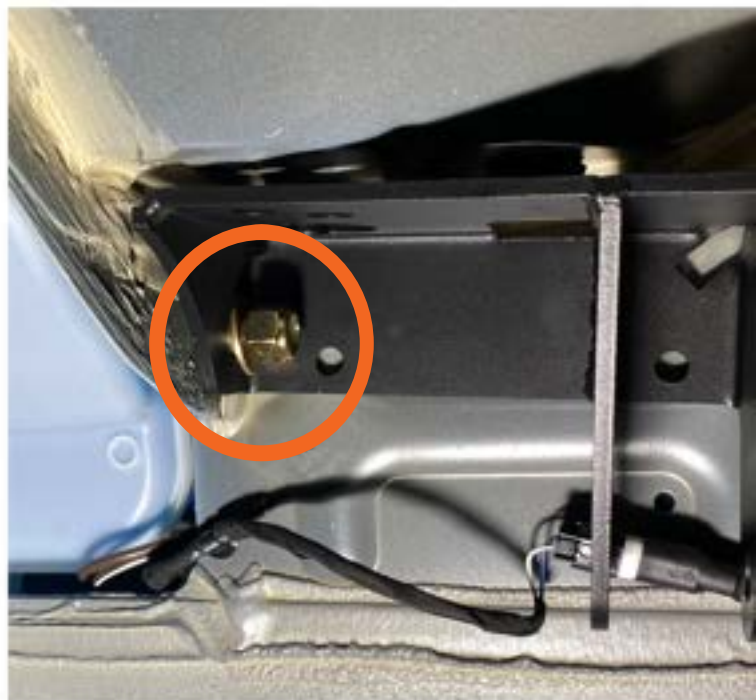
Install the new Agile lower billet bracket as shown. Apply blue threadlocker to the supplied M10 bolts.



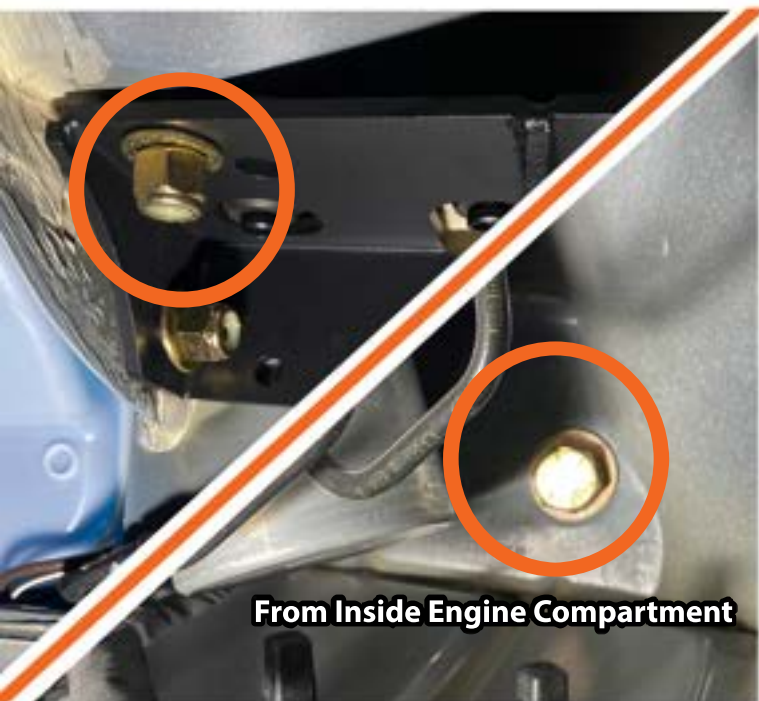
Install the four bolts. Torque bolts to 40 ftlbs. Repeat the same process on the opposite side.



Driver Side: Clean the upper bracket mounting surface of any debris or excessive body filler.



Start the driver side bracket installation with the supplied 1/2-13x1.25" bolt, washers, and nylock nut as shown. Do not completely tighten at this point.

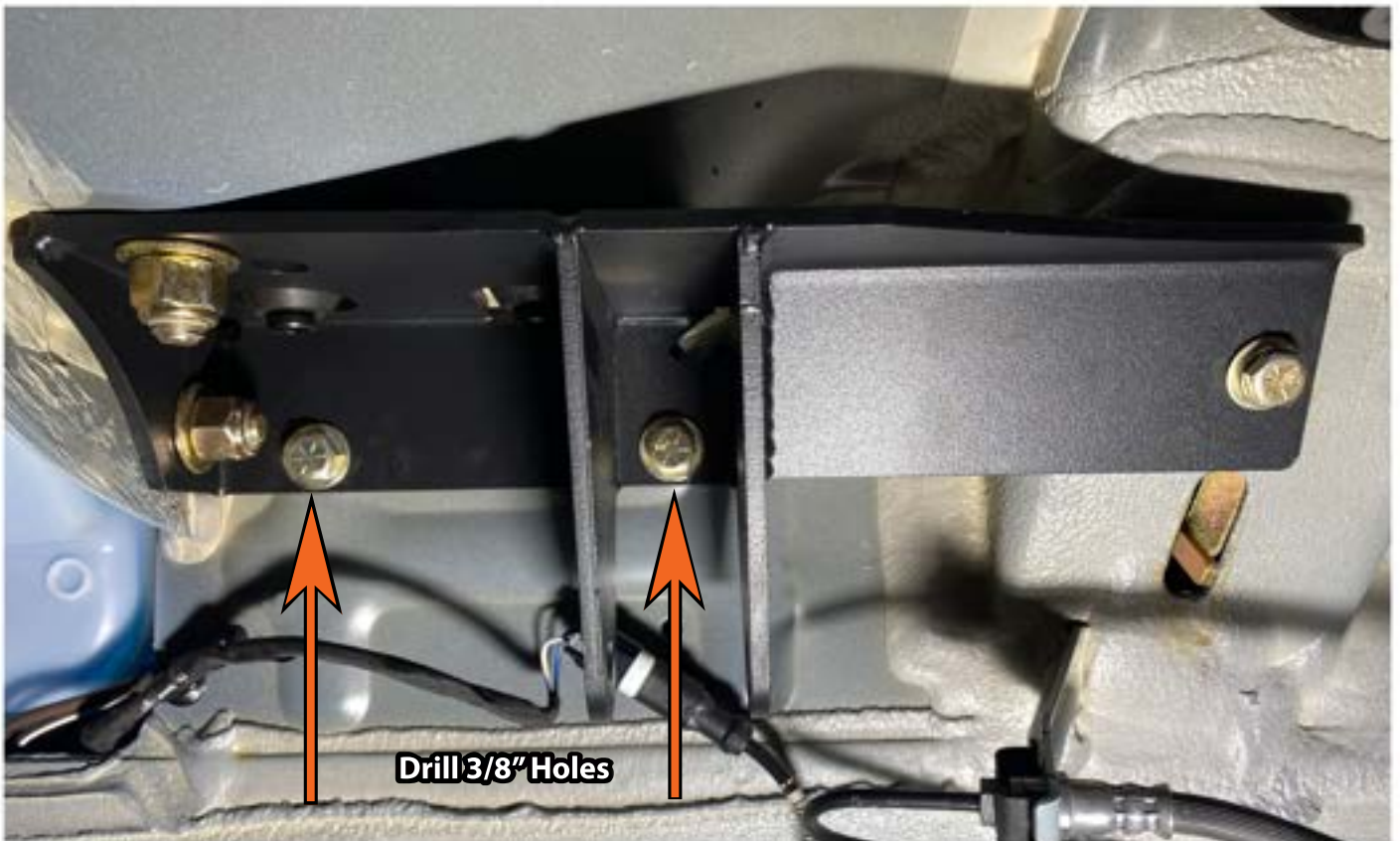


From Inside Engine Compartment

Install the supplied 1/2-13x1.25" bolt and washer from the inside of the engine compartment down through the bracket. Install the supplied washer and nyloc nut at bracket as shown. This will require the help of an assistant. Do not completely tighten at this point.

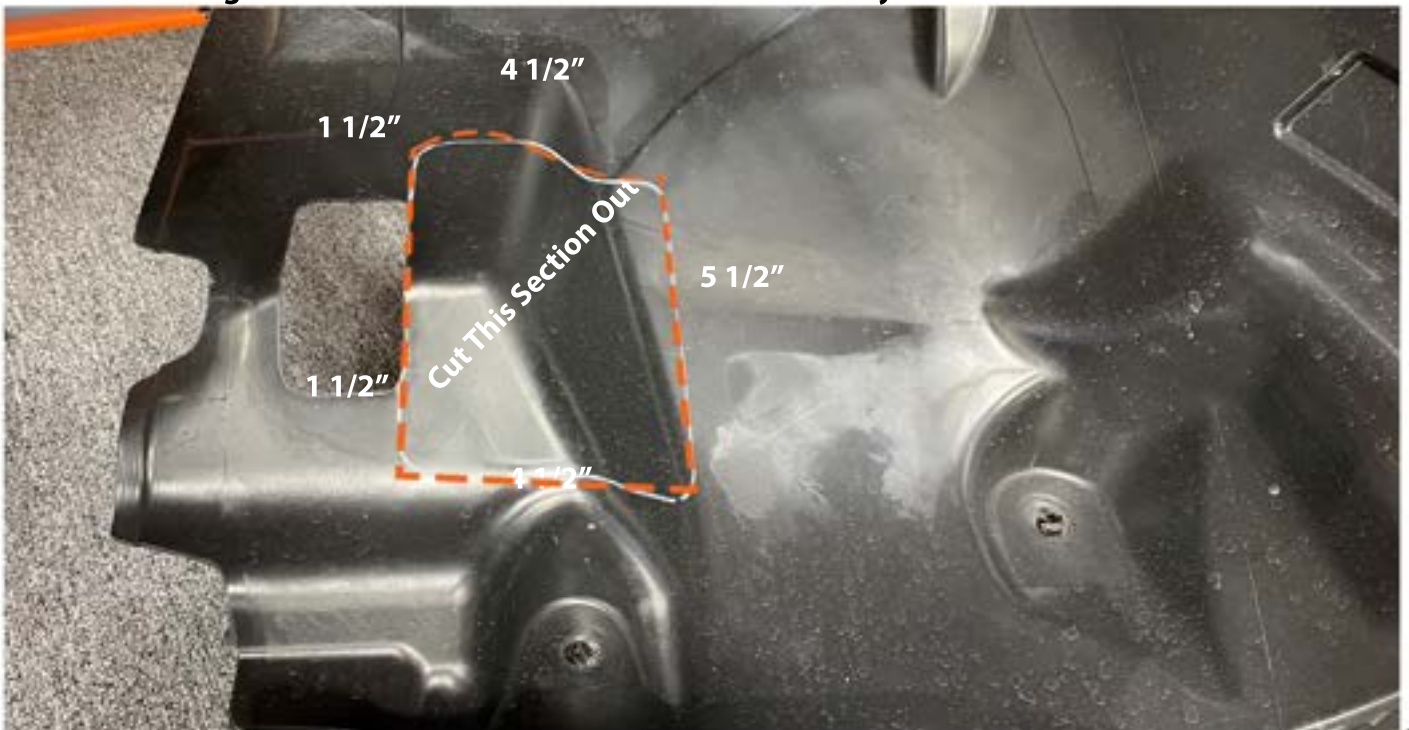


Install the supplied 3/8-16x1" bolt, flat washer, and lock washer through the rear bracket mounting hole using the supplied flag nut as shown. Do not fully tighten at this point.



Tighten the front upper 1/2" bolt first and then tighten the rear 3/8" bolt making sure the bracket is level. Now fully tighten the front 1/2" bolt. Using the two lower bracket holes as guides, drill 3/8" holes through the sheet metal and install the supplied 3/8-16x1" bolts, washers, and nyloc nuts. This will require the help of an assistant. Fully tighten the 3/8" bolts. Torque 1/2" bolts to 100 ft lbs and 3/8" bolts to 40 ft lbs.

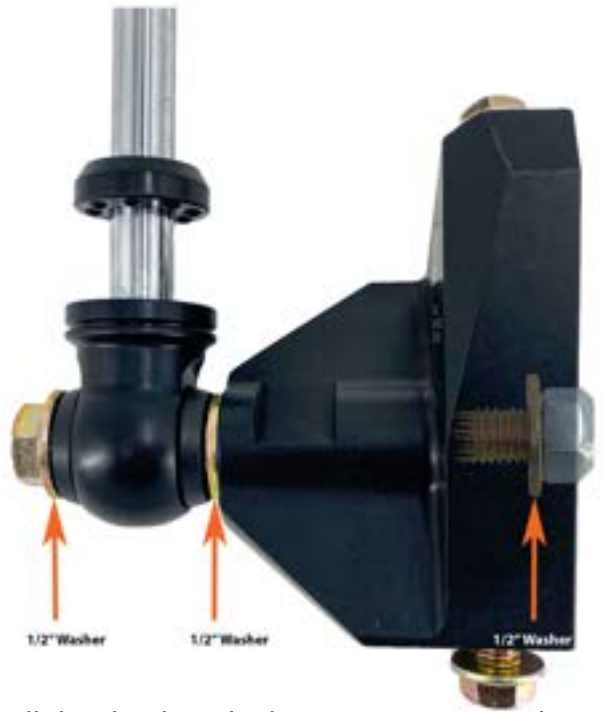
****Before Drilling Holes Make Sure the Back Side is Clear of Any Obstructions****



Cut the front inner fender liner as shown and re-install using the factory hardware. Repeat the same process on the opposite side liner.



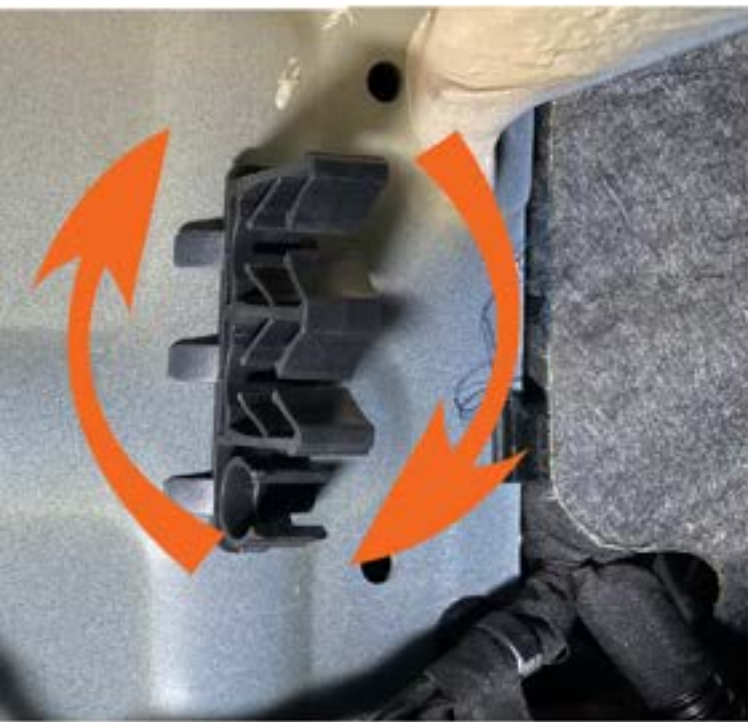
Install the shock to the upper mount using the supplied 1/2-13x2.75" bolt, washers, and nyloc nut as shown. Torque to 100 ft lbs.



Install the shock to the lower mount using the supplied 1/2-13x5" bolt, washers, and lock nut as shown. Torque to 100 ft Lbs.



2023+ Passenger Side: Remove the DEF lines and wire harness from the two factory retainer clips.



With the DEF lines and wire harness removed, rotate the two retainer clips 180 degrees.



The two retainer clips should look as shown above when rotated.



Re-install the DEF lines and wire harness to the retainer clips as shown above.

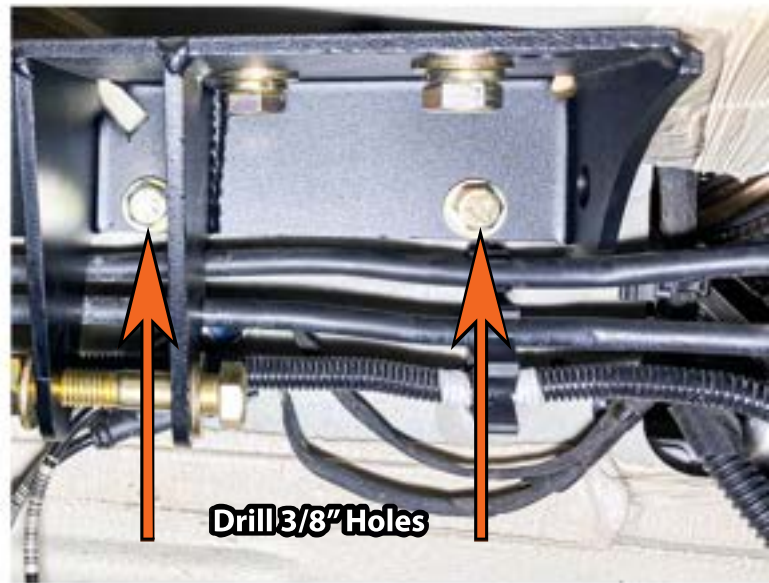


Inside Engine Compartment

Start the passenger side bracket installation with the supplied 1/2-13x1.25" bolts, washers, and double nut plate. Install bolts through the upper bracket with the double nut plate inside the engine compartment. Do not completely tighten at this point. This will require the help of an assistant.



Install the supplied 3/8-16x1" bolt, flat washer, and lock washer through the rear bracket mounting hole using the supplied flag nut as shown. Fully tighten the upper 1/2" bolts and the rear 3/8" bolt making sure the bracket is level.



Drill 3/8" Holes

Using the two lower mounting holes as guides, drill 3/8" holes through the sheet metal and install the supplied 3/8-16x1" bolts, washers, and nyloc nuts. This will require the help of an assistant. Fully tighten the 3/8" bolts. Torque 1/2" bolts to 100 ft lbs and the 3/8" bolts to 40 ft lbs. ****Before Drilling Holes Make Sure the Back Side is Clear of Any Obstructions****



Re-install the inner fender liner using the factory hardware. Install the shock to the upper mount using the supplied 1/2-13x2.75" bolt, washers, and nyloc nut. Torque to 100 ft lbs.



Install the shock to the lower mount using the supplied 1/2-13x5" bolt, washers, and lock nut as shown. Torque to 100 ft lbs.



Re-install the wheels and tires. Torque to the manufacturers recommended torque specs.

Safe and Agile Travels!